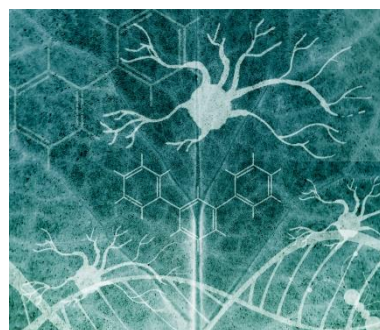


# Opportunity Assessment for Targeted Therapy

Scientific intelligence and digital decode support to a leading biotech company for targeted checkpoint inhibitors



## Quick overview

Our client needed scientific intelligence for the tumor positioning of their pipeline assets which are targeted for specific checkpoint inhibitors (PD1/PDL1). The analytics would require both scientific proof gathering and analyzing the big data using advanced analytics and visualization tools. The output was used by R&D and computational biology teams to understand and compare important parameters such as upregulation of PD-1/PDL-1, aggregated survival curves, and further meta-analyze the data to assess & compare efficacy parameters for targeted tumor positioning

## Client success

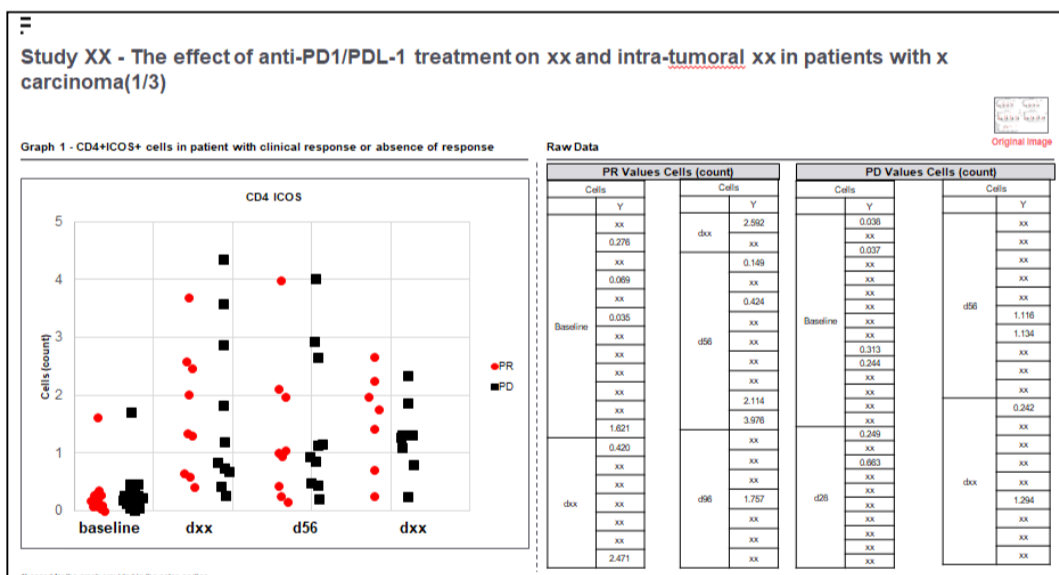
With FutureBridge's comprehensive methodology focusing on scientific literature identification, understanding of 100+ different data points related to checkpoint inhibitors, analysis using digitization tools such as python, the client was able to receive the following insights-

PD1/PDL-1 antagonists have shown their efficacy in hot tumors like Melanoma, however their effectiveness is still in exploratory phase for other wide range of tumors. There are significant challenges associated such as scattered information for key attributes. Collection & interpretation of these data points using advanced tools can certainly help in expedited drug development.

- What is the dose-response relationship for Anti PD1/PDL-1 drugs as regards on-treatment biomarkers?
- What is the rank order value of various correlative biomarkers associated with anti-PD1/PDL-1 treatment?
- What is the relative activity of anti-PD1/PDL-1 therapies across evaluated indications?

FutureBridge conducted comprehensive research across PD1/PDL-1 checkpoint inhibitors. These included:

- Systematic literature review and a detailed pre-clinical, clinical trials, and patent landscape for multiple therapeutic areas and tumor types
- Prioritizing tumor types and expression levels
- Advanced clinical trial analytics
- Interpretation and image digitization using digital tools and data extractions from publications
- Database creation and predictive analytics across different parameters



The analytics provided by FutureBridge supported our client to access scientific proof to understand and compare rank order value of various correlative biomarkers augmenting anti-PD1/PDL1 treatment.

Using advanced analytics tools, the client could also gain significant insights around overall survival, progression-free survival & hazard ratios of the drugs used in those studies.

In addition, with advanced visualizations, it was easy to compare the different studies to assess & compare the efficacy of the drugs for dosage, frequency, sub-group analysis, and other parameters for their drug positioning for specific tumor types.

## About FutureBridge

FutureBridge tracks from 1 to 25 years, how industries and sectors will evolve, develop, and innovate.

We keep you ahead on the technology curve, propel your growth, identify new opportunities, markets and business models, answer your unknowns, and facilitate best-fit solutions and partnerships using our platforms, programs, and access to global ecosystems and players.